

Comfort Door
Air Curtain

Li Silent



www.stavoklima.eu

Description

The Li-SILENT air curtain is a new generation of modern and effective Li series air curtains. Its design predisposes it for installation to high-end interiors. It is a harmonic element of the space, and it meets all functional requirements at the same time. Integration into any building design is easy owing to a wide range of power output, effective EC fans, and its compact design.

The air curtain forms a natural air barrier against penetrating cold air in the heated environment and vice versa, the air curtain prevents from hot air entering the air-conditioned environment in summer; and protects against undesirable smell, insects, and dust. In these installations, the air curtain will meet all requirements for the energy-saving equipment and thermal comfort in the building.

The Li-Silent air curtain meets high requirements for a contemporary product:

- maximum noise reduction
- optimum energy saving
- high efficiency
- excellent operational reliability and lifecycle
- timeless and compact design
- quality materials used and quality components
- accurate manufacturing quality



The Li-Silent air curtains correspond to requirements for installation into a space where low noise level, provision of cost-effective operation, and blending with the space owing to its pleasant design is required. Hence, they are excellent option for:

- banks and hotels
- restaurants
- museums and libraries
- shops and supermarkets
- clinics and residential buildings

... and else where tranquil and relaxed atmosphere contributes to better well-being and work.

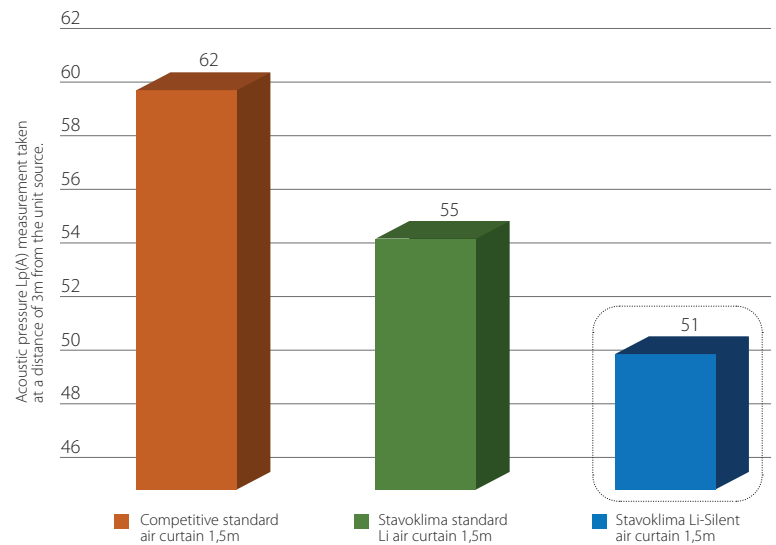
Door air curtain draft

For curtaining, the following may be used:

- circulating air heated by electric or hot-water heater (upon request)



Сравнение шумовой нагрузки ВТЗ с длиной блока 1500 мм



Basic features:

- position: vertical / horizontal
- heating: water heated, electric heated
- for the door heights: 2,7; 3,5m
- for the door widths: 1,0; 1,5; 2,0; 2,5m further unit assembly for all kinds of larger door
- colour: RAL 9010 (white) in standard, all other RAL palette colours on demand



Door air curtain draft

A stress factor of the modern times, which influences us all, is noise. A modern working environment is characterized by high noise level both it includes office spaces, common operation on various workplaces, phones, machines, chats in the rooms – it all stresses the nerves, disrupts concentration, and influences a man negatively in general including working performance.

Both positive and negative noise parameters of a room needs to be thoroughly considered in planning of installation of the low noise level air curtains.

The negative parameters of the room include:

- noise-echoing floor types (e.g., stone, wooden floors)
- noise-echoing walls (e.g., glass, stainless steel) small, sounded rooms
- noise-echoing furniture

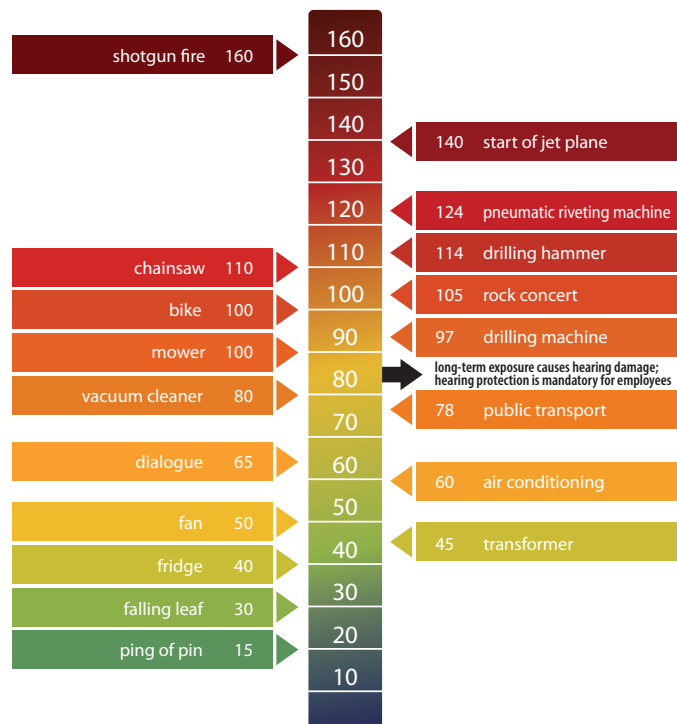
The positive parameters of the room include:

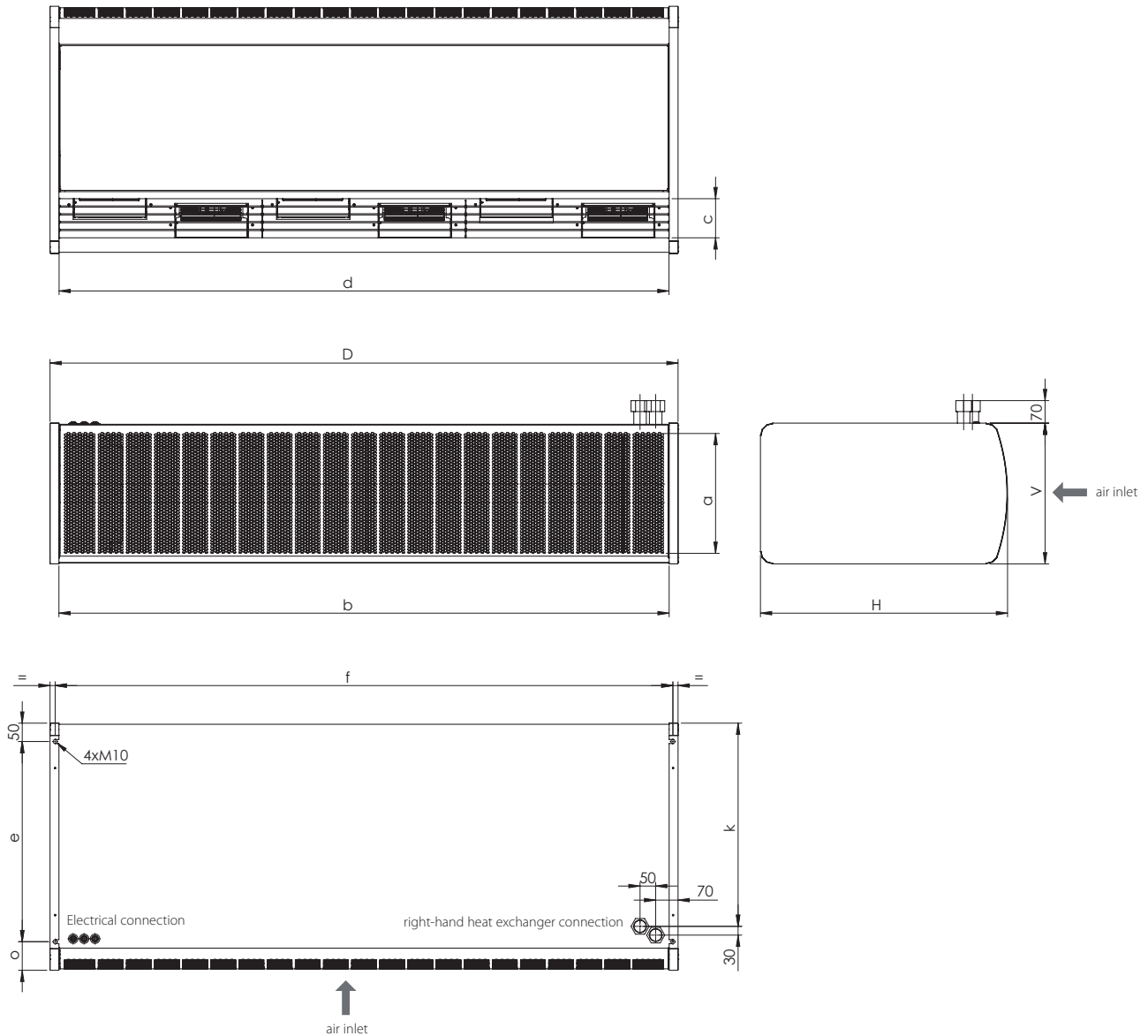
- noise-absorbing floor types (e.g., carpet, cork, and more)
- noise-absorbing walls (e.g., plasterboards, mineral wool boards, ...)
- noise-absorbing equipment in the room (e.g., upholstery furniture)



Quiet operation of the Li-Silent air curtain contributes to the feeling of comfort and higher efficiency. Noise level of the Li-Silent air curtain is about 50 dB(A) at maximum fan speed – it's noise level thereby corresponds to the noise level of a quiet office or common talk.

Accoustic noise level db (A)





| Type - Li Silent | | | | THCP 100-3-Li0 | THCP 150-3-Li0 | THCP 200-3-Li0 | THCP 250-3-Li0 | THCP 100-3-Li2 | THCP 150-3-Li2 | THCP 200-3-Li2 | THCP 250-3-Li2 |
|----------------------------------|--------|---|------|----------------|----------------|----------------|----------------|----------------|----------------|----------------|----------------|
| Dimensions | length | D | [mm] | 1010 | 1510 | 2010 | 2480 | 1010 | 1510 | 2010 | 2480 |
| | height | V | [mm] | 345 | 345 | 345 | 345 | 400 | 400 | 400 | 400 |
| | depth | H | [mm] | 625 | 625 | 625 | 625 | 1080 | 1080 | 1080 | 1080 |
| Dimensions of the suction grille | width | a | [mm] | 280 | 280 | 280 | 280 | 335 | 335 | 335 | 335 |
| | length | b | [mm] | 950 | 1450 | 1950 | 2420 | 950 | 1450 | 1950 | 2420 |
| Dimensions of the outlet grille | width | c | [mm] | 80 | 80 | 80 | 80 | 100 | 100 | 100 | 100 |
| | length | d | [mm] | 950 | 1450 | 1950 | 2420 | 950 | 1450 | 1950 | 2420 |
| Mounting | | e | [mm] | 495 | 495 | 495 | 495 | 945 | 945 | 945 | 945 |
| | | f | [mm] | 975 | 1475 | 1975 | 2445 | 975 | 1475 | 1975 | 2445 |
| | | o | [mm] | 80 | 80 | 80 | 80 | 85 | 85 | 85 | 85 |
| Connection | | k | [mm] | 485 | 485 | 485 | 485 | 930 | 930 | 930 | 930 |

Technical data

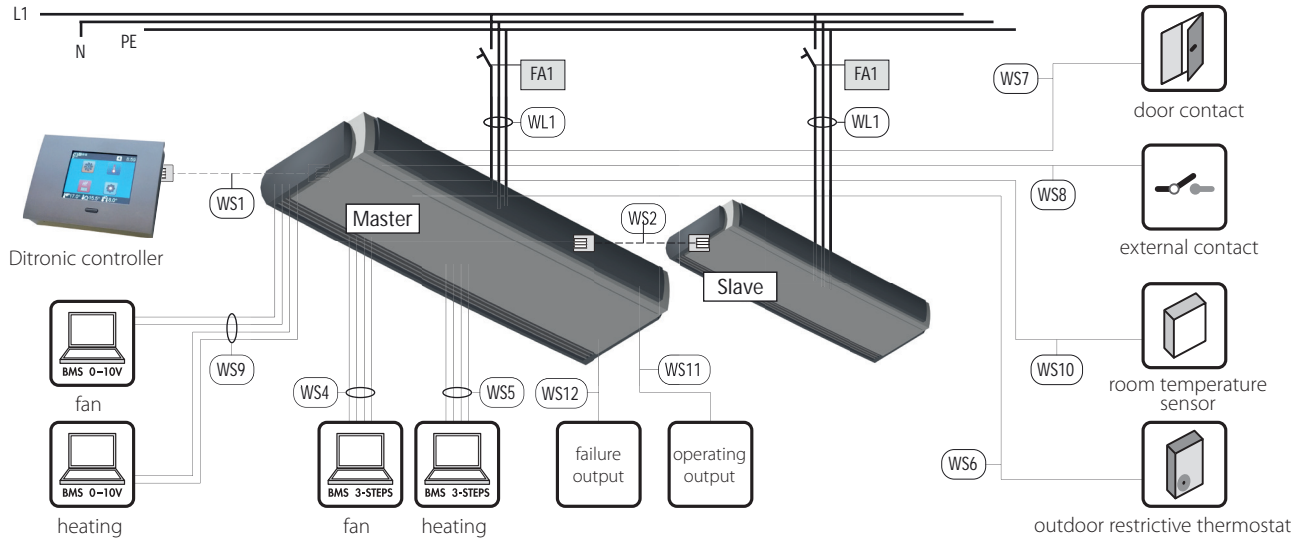
| Technical data - water heated air curtain | | THCP 100-3- Li0 NN Silent | THCP 150-3- Li0 NN Silent | THCP 200-3- Li0 NN Silent | THCP 250-3- Li0 NN Silent | THCP 100-3- Li2 NN Silent | THCP 150-3- Li2 NN Silent | THCP 200-3- Li2 NN Silent | THCP 250-3- Li2 NN Silent | |
|---|-------------|---------------------------|---------------------------|---------------------------|---------------------------|---------------------------|---------------------------|---------------------------|---------------------------|-----|
| | [m³/h] | 1725 | 2100 | 4325 | 5250 | 3100 | 4325 | 7775 | 9450 | |
| Hot-water coil 70/50/18°C | | | | | | | | | | |
| heating capacity | [kW] | 13,7 | 20 | 36,6 | 45,2 | 21,7 | 34,7 | 57,6 | 71 | |
| pressure lost | [kPa] | 3,8 | 6,1 | 9,7 | 6,8 | 6,1 | 8,5 | 11 | 8,6 | |
| flow volume rate | [m³/h] | 0,58 | 0,83 | 1,55 | 1,9 | 0,9 | 1,47 | 2,45 | 3,1 | |
| Hot-water coil 60/40/18°C | | | | | | | | | | |
| heating capacity | [kW] | 9,9 | 14,9 | 27 | 33 | 15,6 | 25,4 | 42,1 | 52 | |
| pressure lost | [kPa] | 2 | 3,7 | 5,8 | 4,1 | 3,5 | 5 | 6,5 | 5,1 | |
| flow volume rate | [m³/h] | 0,39 | 0,61 | 1,15 | 1,4 | 0,65 | 1,08 | 1,8 | 2,23 | |
| Connection | [DN] | DN 20 | DN 20 | DN 20 | DN 20 | DN 20 | DN 20 | DN 25 | DN 32 | |
| EC fan | | | | | | | | | | |
| fan power input | [W] | 210 | 290 | 450 | 530 | 262 | 368 | 580 | 686 | |
| fan current | [A] | 1,6 | 2,2 | 3,5 | 4,2 | 1,9 | 2,8 | 4,5 | 5,3 | |
| fan voltage | [V] | 230 | 230 | 230 | 230 | 230 | 230 | 230 | 230 | |
| Recommended protection | FA1 | B/6A/1p | B/6A/1p | B/10A/1p | B/10A/1p | B/10A/1p | B/10A/1p | B/16A/1p | B/16A/1p | |
| Cable | WL1 | 3Jx1,5 | 3Jx1,5 | 3Jx1,5 | 3Jx1,5 | 3Jx1,5 | 3Jx1,5 | 3Jx2,5 | 3Jx2,5 | |
| Protection degree | | IP 20 | | | | IP 20 | | | | |
| Controller | | Ditronic Touch | | | | Ditronic Touch | | | | |
| Noise level | Lp (A) - 3m | dB (A) | 50 | 51 | 52 | 53 | 50 | 51 | 52 | 53 |
| Weight | | [kg] | 58 | 87 | 115 | 139 | 98 | 128 | 160 | 196 |

| Technical data - electric air curtain | | THCP 100-3- Li0 E Silent | THCP 150-3- Li0 E Silent | THCP 200-3- Li0 E Silent | THCP 250-3- Li0 E Silent | THCP 100-3- Li2 E Silent | THCP 150-3- Li2 E Silent | THCP 200-3- Li2 E Silent | THCP 250-3- Li2 E Silent | |
|---------------------------------------|-------------|--------------------------|--------------------------|--------------------------|--------------------------|--------------------------|--------------------------|--------------------------|--------------------------|-----|
| | [m³/h] | 1750 | 2150 | 4400 | 5350 | 3150 | 4400 | 7925 | 9625 | |
| Electrical heater | | | | | | | | | | |
| Capacity alt 1 Max. [kW] | | 5,0 | 7,5 | 12,5 | 15,0 | 5,0 | 12,5 | 15,0 | 20,0 | |
| Capacity alt 2 Max. [kW] | | 7,5 | 10,0 | 15,0 | 17,5 | 7,5 | 15,0 | 20,0 | 25,0 | |
| Capacity alt 3 Max. [kW] | | 10,0 | 12,5 | 20,0 | 22,5 | 10,0 | 17,5 | 25,0 | 30,0 | |
| Power supply | [V] | 3x230V | | | | 3x230V | | | | |
| EC fan | | | | | | | | | | |
| fan power input | [W] | 210 | 290 | 450 | 530 | 262 | 368 | 580 | 686 | |
| fan current | [A] | 1,6 | 2,2 | 3,5 | 4,2 | 1,9 | 2,8 | 4,5 | 5,3 | |
| fan voltage | [V] | 230 | 230 | 230 | 230 | 230 | 230 | 230 | 230 | |
| Recommended protection | FA1 | B/6A/1p | B/6A/1p | B/10A/1p | B/10A/1p | B/10A/1p | B/10A/1p | B/16A/1p | B/16A/1p | |
| Cable | WL1 | 3Jx1,5 | 3Jx1,5 | 3Jx1,5 | 3Jx1,5 | 3Jx1,5 | 3Jx1,5 | 3Jx2,5 | 3Jx2,5 | |
| Protection degree | | IP 20 | | | | IP 20 | | | | |
| Controller | | Ditronic Touch | | | | Ditronic Touch | | | | |
| Noise level | Lp (A) - 3m | dB (A) | 50 | 51 | 52 | 53 | 50 | 51 | 52 | 53 |
| Weight | | [kg] | 58 | 87 | 115 | 139 | 98 | 128 | 160 | 196 |

Electric heater protection table - EO

| Electric heater | 5kW | 7,5kW | 10kW | 12,5kW | 15kW | 17,5kW | 20kW | 22,5kW | 25kW | 27,5kW | 30kW | 37,5kW |
|-----------------|-----|----------|----------|----------|----------|----------|----------|----------|----------|----------|----------|----------|
| Protection | FA2 | B/16A/1p | B/16A/3p | B/16A/3p | B/16A/3p | B/16A/3p | B/16A/3p | B/16A/3p | B/16A/3p | B/32A/3p | B/32A/3p | B/50A/3p |
| | FA3 | B/16A/1p | B/16A/3p | B/16A/3p | B/16A/3p | B/16A/3p | B/32A/3p | B/32A/3p | B/32A/3p | B/32A/3p | B/32A/3p | B/50A/3p |
| Cables | WL2 | 3Jx4 | 5Jx4 | 5Jx4 | 5Jx4 | 5Jx4 | 5Jx4 | 5Jx4 | 5Jx4 | 5Jx10 | 5Jx10 | 5Jx16 |
| | WL3 | 3Jx4 | 5Jx4 | 5Jx4 | 5Jx4 | 5Jx4 | 5Jx10 | 5Jx10 | 5Jx10 | 5Jx10 | 5Jx10 | 5Jx16 |

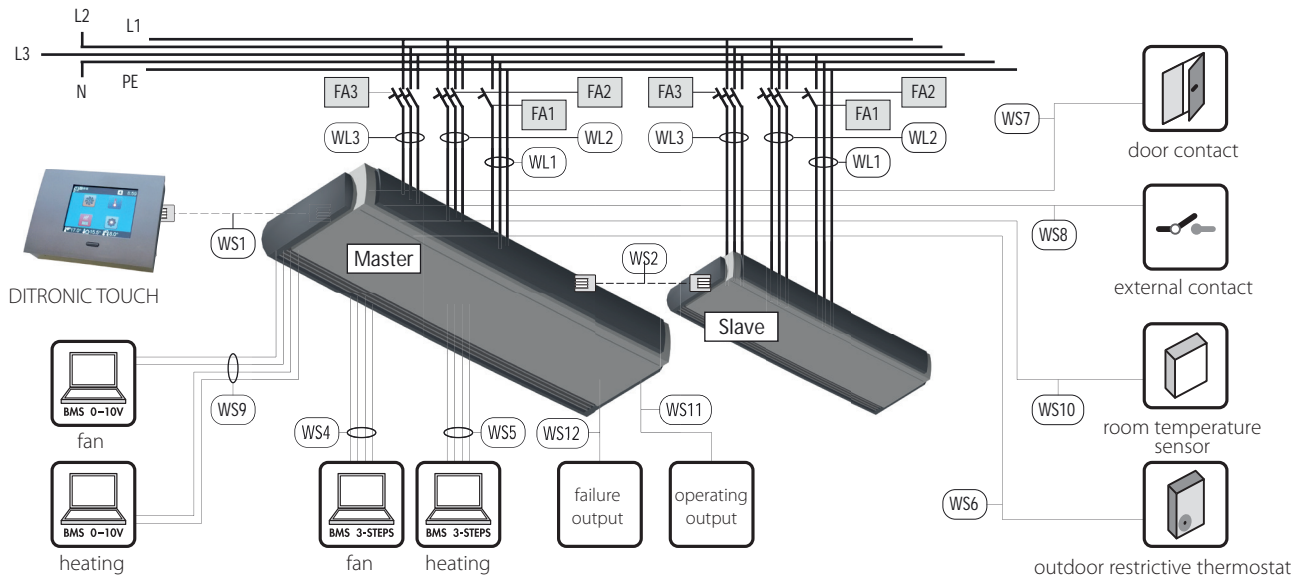
Water heated air curtains



Cables and Protection - water heated air curtains

| | | | | | | | |
|------------|----------------------|------------|-------------|------------|-------------|-------------|-------------|
| FA1 | see tech.data page 6 | WS4 | 5D x 1(1,5) | WS7 | 2A x 1(1,5) | WS10 | 2A x 1(1,5) |
| WL1 | see tech.data page 6 | WS5 | 5D x 1(1,5) | WS8 | 2A x 1(1,5) | WS11 | 2A x 1(1,5) |
| WS1 | 4 x 2 x 0,5 | WS6 | 2A x 1(1,5) | WS9 | 5D x 1(1,5) | WS12 | 2D x 1(1,5) |

Electrically heated air curtain



Cables and Protection - electrically heated air curtains

| | | | | | | | | | | | |
|------------|----------------------|------------|------------------------|------------|--------------|------------|-------------|-------------|-------------|-------------|-------------|
| FA1 | see tech.data page 6 | WL1 | viz. tech. data str. 6 | WS1 | 4 x 2 x 0,5 | WS5 | 5D x 1(1,5) | WS8 | 2A x 1(1,5) | WS11 | 2A x 1(1,5) |
| FA2 | see tab. page 6 | WL2 | viz.tab.EO | WS2 | 4 x 2x x 0,5 | WS6 | 2A x 1(1,5) | WS9 | 5D x 1(1,5) | WS12 | 2D x 1(1,5) |
| FA3 | see tab. page 6 | WL3 | viz.tab.EO | WS4 | 5D x 1(1,5) | WS7 | 2A x 1(1,5) | WS10 | 2A x 1(1,5) | | |

Accessories



2-way and 3-way valves for temperature regulation

As required by the customer, an embedded 2-way or 3-way valve with control head can be delivered for the hot water heat exchanger. The valve drive may be either self-acting (thermostatic) or electrothermic.

The thermostatic head is always delivered with a separated sensor being located behind the water heat exchanger – exhausted air temperature control.

The electrothermic valve drive can be supplied to the hot water heat exchanger as embedded either as 2-way or 3-way. The valve is characterized by quiet and failure-free operation. Should the thermal drive be under voltage, the built-in sensor heats up. Following some time difference the drive starts continuously closing. Upon voltage interruption, the thermal drive continuously opens up; the opening time is about 4 minutes in case of cold-start.

The drive is always delivered in “normally open” (NO – 230V/3W) version.



| name | characteristics | head | Kvs value [bar] | admissible pressure difference [bar] | admissible working temperature [°C] | admissible working pressure [bar] | temperature range [°C] |
|-----------|---------------------|-----------------------|-----------------|--------------------------------------|-------------------------------------|-----------------------------------|------------------------|
| TV XXL" | 2-way valve | thermostatic | 8,0 | 0,2 | 120 | 10 | 25-57 |
| TVT 1" | 3-way valve | thermostatic | 4,6 | 0,5 | 120 | 10 | 20-50 |
| TVT 5/4" | 3-way valve | thermostatic | 6,4 | 0,25 | 120 | 10 | 20-50 |
| ETVT 1" | 3-way valve | electro-thermic | 4,6 | 0,5 | 100 | 10 | - |
| ETVT 5/4" | 3-way valve | electro-thermic, IP54 | 6,4 | 0,25 | 100 | 10 | - |
| ETVQ 1" | Pressure independet | electro-thermic, IP54 | - | 0,23/4 | 90 | 16 | - |
| ETVQ 5/4" | Pressure independet | electro-thermic, IP54 | - | 0,23/4 | 90 | 16 | - |



Door contact: 24V

DKM – mechanical door contact / DKMG – magnetic door contact



Room thermostat: 230V

- Wall mounting
- version: basic, with a switch, digital or industry with IP54



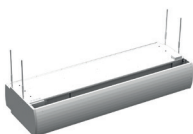
PPH – connection flexible tubes

- 300mm long flexible connection pipes with stainless steel or braided reinforcement for ease of connection from the air curtain connections to the system connections.
- Set consists of 2 number pipes to DN 20, 25, 32



BMS 0-10V

- controlling the unit by BMS 0-10V



ZSA – Under ceiling suspension

- Under ceiling suspension with adjustable length of 1000 mm.
- Units levelled by adjustment on the drop rods for air curtains up to 2000 mm length

Control system of water and electrical heated air curtains DITRONIC TOUCH

Ditronic controller is fitted with an intelligent processor regulator, designed specifically for Comfort and Design air curtains that are fitted with AC or EC fans. Due to the units sleek design and readable blue colour screen, it is suitable for most kinds of interior design applications (from a basic type to the more expensive stylish type). The controller offers local control, control from superior system (BMS) or Modbus compatibility.



Dimensions: 125 x 90 x 32 (w x h x d) in mm



Description of standard functions of Ditronic controller



Week time clock

The unit is programmable with simple calendar settings in order to run in different mode on working days and during the weekend (options: 1-7 or 1-5 and 6-7).



Anti-frost protection

All water heated air curtains are equipped with anti-frost protection. This protection works in two stages. When the risk of freezing is detected, the valve opens, the fans turn off and a signal sign is displayed on Ditronic.



Filter maintenance interval

The unit automatically signals the air filter cleaning request.



Indication of the room, outlet and media temperature

The room, outlet and media temperature is displayed on the front panel.



Door contact

The unit can be controlled with the door contact. After the door is closed, the delayed running is activated. The delayed time period is adjustable.



Keyboard Lock

The buttons can be easily locked to prevent any unwanted changes of settings.



Regulation via room or outlet temperature settings.

The system allows to control the temperature according to the room or outlet air temperature. There is an inbuilt function to restrict the min. outlet temperature at the same time.



Superior system – 3-step BMS

The whole unit can be regulated by the superior regulation system. 3-grade control of heating and fan is inbuilt in standard. At this kind of control the unit is completely controlled by BMS (building management system).



Setting the valve door contact

The user has the option to choose whether the valve is dependent on door contact (when the door is closed, the valve closes) or independent (if the temperature difference shows the requirement for heating, the valve remains opened after door closes).



Fault and operating output of the device

The unit is equipped with outputs for failure and operation to signalize the failure on the display.



HELP TRONIC - QR code display.

Use a reader to get to the user manual to troubleshoot the Ditronic Touch.



Restrictive exterior thermostat

When the required temperature is reached, the heating (or the whole unit) can be switched off via the restrictive thermostat.



MASTER/SLAVE

The units can be connected in series as Master and Slaves. The room sensor is used for MASTER unit only.



External contact

The Air curtain can be switched on/off from a distant place with the external contact. If the function is enabled, wireless radio remote controller is not possible.



Automatic mode

The unit can run in the automatic mode. When the door is open, the device works according to the parameters selected on the controller. After closing the door, the device automatically switches to the corresponding stages heating and fan (according to the difference of required and actual temperatures).



Additional heating mode

If necessary, the unit can cover a sudden drop of temperature by turning on the additional heating mode. High heating capacity will be reached in a very short time.



Superior system Modbus

The controller offers the user the option to control devices using Modbus protocol.



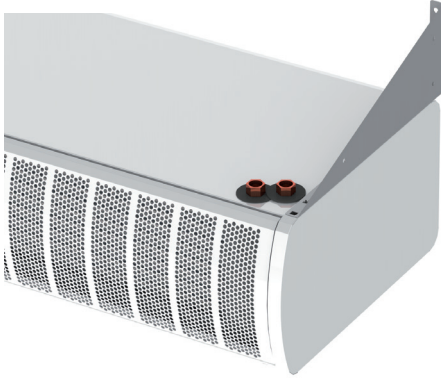
BMS 0-10V

For control from BMS 0-10V it is necessary to order module for control with continuous signal 0-10V.

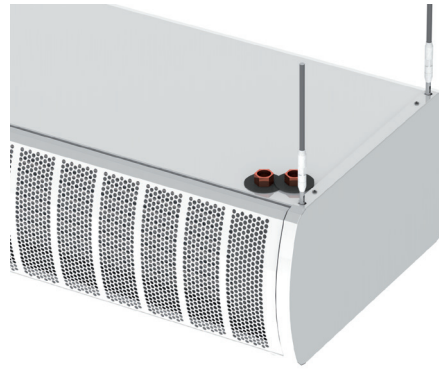
Order code

Connection and Position

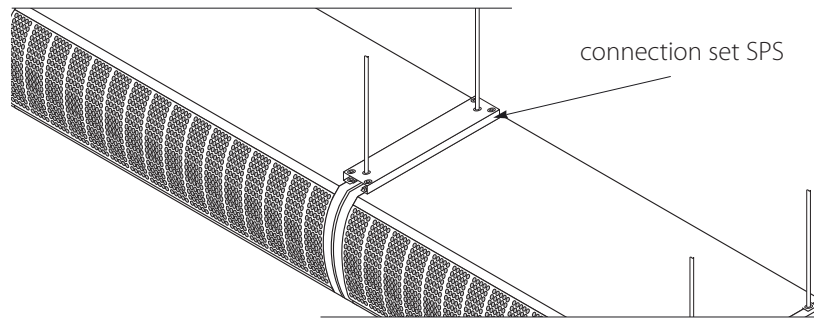
Wall suspension



Underceiling suspension



Connection of air curtains



Order code

T - HC - P - 200 - 3 - Li 0NN - Silent

| | | | | | |
|---|--------------------------|---|--|----------------------------|--|
| Type | Unit position | Heat exchanger version | Unit length | Internal producer code | Air curtain capacity level |
| S - ambient unit (without heat exchanger) T - unit with hot water or electrical heat exchanger | HC - horizontal position | P - right connection (from indoor perspective) L - left connection (from indoor perspective) | 150 - unit length 1500 mm 200 - unit length 2000 mm 250 - unit length 2500 mm 300 - combination of, (150 + 150) units | 3 - Internal producer code | Li0 NN - capacity level 2; heater for low-temperature gradients; recommended mounting height 2,5m Li2 NN - capacity level 4; heater for low-temperature gradients; recommended mounting height 3,5m Li0 E - capacity level 2; electric heater; recommended mounting height 2,5m Li2 E - capacity level 4; electric heater; recommended mounting height 3,5m |

Li Silent 07/18 AN

Distributor: